

APPENDIX A

NAKAI PLATEAU NOTIFICATION, REGISTRATION AND SOCIO-ECONOMIC SURVEY (OF 1998)

Table of Content

A-1	OBJECTIVES -----	1
A-2	NOTIFICATION AND CUT-OFF DATE -----	1
A-3	REGISTRATION-----	3
A-4	SOCIO-ECONOMIC SURVEY -----	3
A-5	OVERVIEW OF FINDINGS -----	4
A-6	SOCIO-ECONOMIC PROFILE -----	5
A-7	CONCLUSION -----	6
A-8	NAKAI DISTRICT CENSUS AND SURVEY-----	7

List of Tables and Figures

Number	Title	Source of Data*	Page Number
Table A-1	Outline of Registration Form Contents	C	7
Table A-2	NT2 Census Data Compilation Sheet	C	8
Table A-3	Sample Size for Socio-Economic Survey	SE	9
Table A-4	Outline of Socio-Economic Survey Form Contents	SE	10
Table A-5	Affected households in the reservoir area by village, from surveys conducted since 1995	C	11
Table A-6	Household Size Distribution of Affected Households	C	12
Table A-7	School Attendance	C	12
Table A-8	Cash and Imputed Incomes of Reservoir Households	SE	13
Table A-9	Income Variability of Villages	SE	14
Figure A-1	Income Variability of Villages	SE	15
Table A-10	Potentially Vulnerable Households	C	16
Table A-11	Age, Marital Status, Birth Place, Gender, Religion of Affected Population	C	17
Table A-12	Education, Occupation of Head of Household	C	18
Table A-13	Education, Occupation of Affected Population	C	18
Table A-14	Housing Characteristics	C	19
Table A-15	Livestock Population for Reservoir Villages	SE	20
Table A-16	Livestock Ownership per Household	SE	21
Table A-17	Fruit Trees in the Reservoir	C	22
Table A-18	Health Data	SE	23
Table A-19	Sample Household Incomes by Village	SE	24
Table A-20	Format of Detailed Household Income Data	SE	30

* C = data from Census
SE = data from Socio-Economic Survey

A-1 OBJECTIVES

In order for the NT2 Resettlement Policy to apply, it was necessary that:

- formal notification be given to affected persons
- a cut-off date is established
- a population and asset count be undertaken and registered
- a socio-economic survey of a sample of affected households is undertaken as a benchmark (baseline) of pre-project conditions.

These actions are under the jurisdiction of GOL. This Appendix sets out the methodology and results of the above actions having been carried out.

An overall Provincial Census was planned by the Lao authorities in the second half of 1998, GOL therefore planned the timing of the specific notification and registration census for Nam Theun 2 for October 1998. All the above events and activities were carried out under the jurisdiction of GOL, with the work carried out by Provincial and District staff with technical assistance from the National Statistics Center and logistical assistance from the RMU and NTEC.

A-2 NOTIFICATION AND CUT-OFF DATE

GOL was requested to issue formal notification to the Plateau households that it intends to create a reservoir on the Plateau and that consequently most households may have to be relocated and compensated.

The formal Notification prepared by GOL (see below) stated that GOL intended to change the land use in the reservoir area and that this required that inhabitants vacate the area at some time in the future. Adequate compensation and replacement opportunities would be provided to those affected. Those taking up residence in the area after notification (the cut-off date) would not be eligible to receive compensation and resettlement. The effective date for the Project as a result of the Notification having been served is October 1, 1998.

The Village Chiefs were actively involved in ensuring that all village households received the Notification (in Lao) and understood it. The Chiefs used a master list on which each household signed that they had been notified.

(English Translation)

**Lao People's Democratic Republic
Peace Independence Democracy Unity Prosperity**

Khammouane Province

No. 0191/Gov.KM
15 September 1998

NOTIFICATION

- With reference to the decision of the Lao PDR Government approving NTEC to develop and build the Nam Theun 2 Project.
- With respect to the creation of the water reservoir of Nam Theun 2 Project.
- With reference to the notification of the Prime Minister's Office No. 2574/PM dated 11.09.98.

The Governor of Khammouane Province hereby notifies the population affected by the proposed water reservoir of NT2 Project as follows:

1. Under the Land Law of 1997, the State may take back in the public interest, lands that are being used by individuals under an assigned or traditional basis (Article 63). Under such circumstances, the State must provide appropriate compensation (Article 70).
2. This NOTIFICATION is intended for all individuals currently living or working in the proposed reservoir below elevation El 539.
3. All individuals under paragraph 2, please take note that the Government will use these lands for the purpose of creating the water reservoir designated under paragraph 2 and will pay compensation for the loss and damages incurred according to the NT2 Resettlement Policy adopted by the Government.
4. All individuals living or working in the reservoir as of 01 October 1998 will be eligible for compensation in accordance with the NT2 Resettlement Policy adopted by the Government. Those individuals who came to live in the reservoir after 01 October 1998 will not be eligible for compensation.
5. All individuals affected by the proposed reservoir will be registered by Nakai District Authority on behalf of Khammouane Province Authority and in collaboration with the Resettlement Management Unit for the purpose of establishing eligibility and determining affected assets.
6. The filling of the proposed reservoir is not expected to take place until 2003; there is therefore sufficient time to make adequate provisions for alternative living and working arrangements.
7. This notification will be delivered to affected individuals by Nakai District Authority on behalf of the Khammouane Province, will be posted in public places in the vicinity of the proposed reservoir, broadcast by the local radio station and published by other mass media.
8. Any questions regarding this NOTIFICATION should be addressed to the Nakai District offices.
9. This notification is issued to provide advance information on the intention of the Government to proceed with the Nam Theun 2 Project, subject to all necessary approvals being obtained.

Thakhek, 15 September 1998
The Governor

Note: A similar notification took place in Bolikhamxay Province.

A-3 REGISTRATION

The purpose of the registration is to make an accurate count (census) of the persons living on the Plateau and the assets they own that would be affected by the Project. Registration establishes eligibility and provides a firm basis on which entitlements can be established and resettlement costs calculated. On the Plateau, three categories of eligible persons, as noted in Chapter 10, are:

- households living inside the reservoir that require relocation
- households living outside the reservoir but deriving benefits from land inside the reservoir
- households living outside the reservoir that may be affected by the Project

The reservoir affected area is defined as the area below El 539.

The registration recorded household information and fixed assets of 1,160 households. The purpose is to provide a basis on which to establish which households are eligible for compensation and what their entitlements would be. It provides detailed information on the composition of households, record their fixed assets and establish whether or not the household chooses to remain on the Plateau or proposes to leave and accept cash as compensation. In addition, the number of household members, the dwelling structure and house sizes are important information for village layout and the actual relocation.

For future identification, a village letter and house number was affixed to each house registered.

In Ban Oudomsouk and in Ban Phonphanpek, which includes the village of Ban Jat San, the registration survey allowed planners to identify which households are affected, and how they are affected. It was necessary to distinguish which households are relying on the land for their livelihood, based on topographic information that has been verified in July 1998, and which households are merchants, officials and wage earners. Table H-1 shows the types of information that was collected at the time of registration. Registered households were issued a registration and identity booklet showing the information that has been collected. This was signed by the household and the RMU.

The registration made an accurate count of the households (and the persons that constitute each household) and the assets that would be affected by the Project for which compensation would be required, either in cash or in kind. On the basis of this information, eligibility and entitlements are to be determined.

The census team used a form (in Lao) for each household as per Table H-2. Each household head signed one of these forms. Data from these forms was then copied into three booklets: one for the householder, one for the RMU and one for the District. The RMU and the District have both signed each booklet. The village chief and each household signed the three booklets upon distribution of the household copies. This distribution was completed by October 2000.

A-4 SOCIO-ECONOMIC SURVEY

With the RMU visiting all Plateau households, this opportunity will be used to carry out a baseline socio-economic survey to collect information on households that will supplement the information collected for registration purposes. Together, the data will establish the reference point for monitoring.

The socio-economic survey collected additional information beyond that collected for the registration by way of a sample household interview survey. This information established baseline conditions on the Plateau, against which future change can be measured.

The survey gives a representative picture of the actual socio-economic situation on the ground. A random selection of the houses was made from village maps before carrying out the survey. For residents absent during the survey, the closest adjacent house was chosen to fill the quota. All households were surveyed in villages and hamlets of 10 or less households. For villages of 10-24 households, 50% were

included in the sample, and 25% were included in the sample for villages with more than 25 households, according to the survey design.

In Table H-3 the actual sample size is indicated, showing that 311 households were included in the socio-economic survey. This is 26.8% of the households on the Plateau, and includes some non-affected households in Ban Oudomsouk and Jat San.

The contents of the socio-economic survey was divided into sections dealing with non-fixed assets, food sources, income sources, health, education and issues. An outline of the contents of a socio-economic data is in Table H-4.

All information collected by means of Registration and Socio-economic Survey was processed and stored electronically by the RMU. Registration data form the basis of individual household files which will be administered by DRWG and RMU.

A-5 OVERVIEW OF FINDINGS

There were altogether **1,160** households and a total of **6,319** persons included in this Registration Census and Asset Count.

The form shown as Table H-2 was signed by each household and shows the data compilation sheet used subsequently to transfer field data into the household booklets and RMU/NTEC computer database.

At the time of registration a village and house identification number was physically attached to each house for future identification and administration purposes.

Table H-5 shows the registration results by village, in comparison to previous survey results.

Due to the combined effects of additional elevation surveys and the registration census, plus the fact that the Army Village of Ban Nong Boua Kham is now deemed to be included, the estimate of the total number of affected households has increased to **886**. The actual total number of persons living in those affected households was **4,889** for an average household size of 5.518 persons.

The computer database that has been developed on the reservoir population has been utilized to extract relevant information and analysis that will assist further implementation planning.

The RMU/NTEC electronic database is available to all interested parties such as GOL Ministries, researchers, NGOs and Development Agencies, for the purpose of furthering the knowledge of health, education, gender, ethnicity and overall development issues regarding the Nakai Plateau population.

Data from affected households was examined against nineteen criteria considered to indicate at least a potential for vulnerability during the actual relocation process and re-establishment of livelihood activities. They are based on gender, age, handicaps, comparative income levels, small households, non-Lao and any shortage of able-bodied working age males in the household. These households will receive special attention from the RMU during the development phase, for instance through the provision of paid laborers to assist in the relocation and re-establishment phases.

The socio-economic database for the sample of households and the census data was used to prepare a 1998 socio-economic profile of the affected reservoir population that can serve as the baseline for future monitoring as well as for further implementation planning. In total, 319 households were selected out of a registered total of 1,160 for a sample of 28 percent. Of these 319 households, 251 were determined to be affected by the Project. Sampling was also carried out for 8 affected households in Ban Nam Nian but the results from this trading village were excluded from income calculations because they were quite atypical. The sample is considered adequate for the purpose of establishing a benchmark database on pre-project conditions that can subsequently be used for monitoring purposes.

An analysis of affected household incomes (Tables H-8) indicates that in nominal Kip terms, incomes have increased from Kip 462,000 in 1996 to Kip 1,628,784 in 1998. However, given the rapid inflation over this period, real incomes have not increased in this proportion. Nevertheless there appears to have been a significant increase in plateau residents' average incomes, albeit from an extremely low base. The variability between villages is shown in Table H-9. It seems also that the proportion of total income accounted for by self-grown products consumed has increased somewhat over the last two years which could be an indication of an increasing reliance on the subsistence mode of living.

There could be several reasons for this apparent increase in income. Perhaps most likely is the fact that the October 1998 surveys were more methodically executed than previous surveys and certainly included the widest range of potential income sources. There is also a possibility that there may be an increased utilization of the resource base in an unsustainable manner. The important issue however is that the October 1998 survey has been carried out with a sufficiently high level of care that it can serve as a base for current planning and future monitoring.

A-6 SOCIO-ECONOMIC PROFILE

The sample size for the Socio-Economic Survey covers 26.8% of all the households to be relocated on the Nakai Plateau. There is much variation in the households in terms of composition and economic activities. It is difficult to describe a typical village or average household. However, a brief profile is provided below in order to give some idea of the main characteristics of the people inhabiting the Nakai Plateau.

The majority of households on the Plateau consist of parents and children but a significant number include other family members as well such as daughters-in-law and other relations. Most households live nearby relatives and for the most part kinship ties are patrilineal. Most people are from the Plateau and marry within a short distance from their village, although inter-marriage between the various ethnic groups is common.

The population is young with the average household consisting of more children than able-bodied adults. As with the composition and size of households, the income variability is high, both among members of villages and between villages. This difference seems to depend on a combination of location on the Plateau, village size, ethnic group and proximity to natural resources. However, village leadership, education levels and recent history of migration also play a role. Differences in household income depend on family size and access to resources.

The majority of people practice a mix of 'folk Buddhism' and local animist traditions consisting of beliefs in territorial spirits, nature spirits and ancestors. Most household heads and women are illiterate. School attendance is irregular at best, except for roadside villages, with children frequently assisting their parents in clearing swidden, harvesting rice or collecting NTFPs.

Most houses have been constructed using traditional materials, that is wood, bamboo and thatch or shingles for roofing. Lighting consists of oil lamps. Water sources are natural springs and nearby rivers and only large villages have regular access to potable water sources throughout the year.

Livelihood systems vary greatly but there are common characteristics. The average household has a mixed economy consisting of swidden upland rice, vegetable gardens, fruit trees, fishing, livestock raising and selling of forest products (NTFPs and wildlife). Having a number of livelihood elements provides a safety net since variation in weather, flooding, scarcity of particular resources, livestock epidemics and other factors, mean that survival necessitates several sources of livelihood. Again there are very large differences between individual household and villages on the Plateau.

A-7 CONCLUSION

Given the fact that it is difficult to describe a typical household, consideration for the range of household types is important. This is especially the case when considering the relocation and its possible effects on vulnerable households, that is households without able-bodied adults, with elderly, with female household heads, ill or with infirm members. It will be important when monitoring and interpreting statistical results always to consider the range of responses or data

A-8 NAKAI DISTRICT CENSUS AND SURVEY

Table A-1: Outline of Registration Form Contents

REGISTRATION	
A)	<p>Household Information</p> <ol style="list-style-type: none"> 1. Names of household members 2. Relationship to family head 3. Sex of each member 4. Age of each member 5. Place of birth of each member 6. Place of residence on 1/99 of each member 7. Ethnic group of each member 8. Marital status of each member 9. Level of education of each member 10. Occupation of each member 11. Last year's livelihood activities 12. Number of dependents presently residing in the house 13. Number of dependents outside the village 14. Number of years in this house/village
B)	<p>Relocation Information</p> <ol style="list-style-type: none"> 1. Name of Village 2. Preference for relocation on the Plateau 3. Relocation village 4. Preference for relocating off the plateau
C)	<p>Fixed Assets</p> <ol style="list-style-type: none"> 1. Who is the owner of the house 2. Type of house. Construction materials 3. Services - water, well, electricity 4. Size in square meters 5. Other structures such as rice barns, pens, spirit houses, etc. 6. Size of these structures in square meters 7. Number of tree fruits and gardens <ol style="list-style-type: none"> a) Old trees: mango, tamarind, jackfruit, coconut, bamboo, etc. b) Middle-aged: sugarcane, coffee, tea, banana, pineapple, etc. c) Annual plants and crops such as rice, corn, vegetables, etc. 8. Number of fishponds in square meters 9. Number of wells or water sources described 10. Amount and quality of irrigated or rain fed paddy in square meters
(D)	<p>Identify Vulnerable Households based on listed categories</p>

Table A-2: NT2 Census Data Compilation Sheet

LAO PDR

NT2 CENSUS, 1 OCTOBER 1998

A		B		C										D		E		F																			
Address		Province	District	Village	Number of House		FOR EACH INDIVIDUAL										years		For those older than 10 years		TREES																
1		2		3		4		5		6		7		8		9		10		11		12		13		14		15		16		17		18			
Who else are the members of this family in 1 October, 1998?		Relationship with the head of the family		Sex		Age		Place of birth		Whereabouts on 1 Oct. 98		Nationality		Ethnic Group		Marital Status		Religion		No. of dependants presently residing in the house		No. of dependants outside the family		Educational Level		Occupation during the past 12 months		Profession		Would you like to move to Houaphou Area		Fruit Trees		Secondary Trees		Land	
Name and Family Name of all the members of this family in 1 Oct., 1998		1. Head of family		1. Male		Present age of child		Place of birth		Place of birth		1. Unmarried		1. Buddhist		1. Unmarried		1. Buddhist		1. Unmarried		1. Unmarried		1. Unmarried		1. Unmarried		1. Unmarried		1. Unmarried		1. Unmarried		1. Unmarried			
The Head of the family should be listed first		2. Husband/Wife		2. Female		Put 0 for children aged below 1 year		Place initial the cedee		Place initial the cedee		2. Married		2. Anamite		2. Married		2. Anamite		2. Married		2. Married		2. Married		2. Married		2. Married		2. Married		2. Married		2. Married			
		3. Son/Daughter		3. Son/Daughter								3. Divorced		3. Christian		3. Divorced		3. Christian		3. Divorced		3. Divorced		3. Divorced		3. Divorced		3. Divorced		3. Divorced		3. Divorced		3. Divorced			
		4. Father/Mother		4. Father/Mother								4. Widow				4. Widow		4. Widow		4. Widow		4. Widow		4. Widow		4. Widow		4. Widow		4. Widow		4. Widow		4. Widow			
		5. Daughter-in-law		5. Daughter-in-law																																	
		6. Relatives		6. Relatives																																	

G										H				I		J			
Facilities										Characteristics of House				Domestic Animals		Total no. of people in the family		Remarks	
Description	Year	Size	Pillar	Wall	Floor	Roof	Remarks				20	21	22	23	Animals	No.	Male	Female	
Houses			1 2 3 4	1 2 3 4	1 2 3 4	1 2 3 4	Pillars:				Ownership	Type of House	Does the house have electricity?	Total area of the house	Buffalo				
Shops			1 2 3 4	1 2 3 4	1 2 3 4	1 2 3 4	1 Bamboo 2 Softwood				1 Owner	1 Concrete	1 Yes		Cow				
Granary			1 2 3 4	1 2 3 4	1 2 3 4	1 2 3 4	3 Hardwood 4 Concrete				2 Tenant	3 Wooded	2 Yes		Horse				
Battached			1 2 3 4	1 2 3 4	1 2 3 4	1 2 3 4	1 Bamboo 2 Softwood				3 Living with	4 Bamboo	(Sharing with others)	3 Yes	Goats, Sheep				
Chicken house			1 2 3 4	1 2 3 4	1 2 3 4	1 2 3 4	3 Hardwood 4 Bricks				4 State House	5 Others	(Using generator)	4 Yes	Pig				
Rice Mill			1 2 3 4	1 2 3 4	1 2 3 4	1 2 3 4	1 Bamboo 2 Softwood				5 Others	5 Others	5 No	Chicken					
Spirit House			1 2 3 4	1 2 3 4	1 2 3 4	1 2 3 4	3 Hardwood 4 Cement							1 Hydrant Water	Duck				
Others			1 2 3 4	1 2 3 4	1 2 3 4	1 2 3 4	1 Thatched 2 Timber Tile							2 Covered Well					
			1 2 3 4	1 2 3 4	1 2 3 4	1 2 3 4	3 Galvanised Iron 4 Masonry Tile							3 Uncovered Well					
			1 2 3 4	1 2 3 4	1 2 3 4	1 2 3 4								4 River, pond					
			1 2 3 4	1 2 3 4	1 2 3 4	1 2 3 4								5 Rain water					
			1 2 3 4	1 2 3 4	1 2 3 4	1 2 3 4								6 Other source					

Table A-3: Sample Size for Socio-Economic Survey

Name of Village	Number of Households from Census		Sample Size for Socio-Economic Survey			
	Total	Affected	Percent		Number	
			Total	Affected	Total	Affected
Ban Oudomsouk	283	94	25%	26%	70	24
Ban Sop Hia	54	54	24%	24%	13	13
Ban Nam Nian*	16	16	50%	50%	8	8
Ban Thalang	52	52	25%	25%	13	13
Ban Nong Boua Kham	42	42	26%	26%	11	11
Ban Nakai Tai	147	147	25%	25%	37	37
Ban Nakai Neua	67	67	25%	25%	17	17
Ban Sop Phene	43	43	23%	23%	10	10
Ban Hat Khamphane	18	18	50%	50%	9	9
Ban Sop Ma	15	15	47%	47%	7	7
Ban Keng Gnao	14	14	50%	50%	7	7
Ban Nong Boua	8	8	100%	100%	8	8
Ban Sailom	13	13	46%	46%	6	6
Ban Pamanton	7	7	100%	100%	7	7
Ban Phonphanpek	85	0	26%	0%	22	0
Ban Boua Ma	53	53	25%	25%	13	13
Ban Phonsavang	25	25	28%	28%	7	7
Ban Nikhom 3	0	0	0%	0%	0	0
Ban Sop On	66	66	24%	24%	16	16
Ban Done	89	89	25%	25%	22	22
Ban Khone Khen	37	37	24%	24%	9	9
Ban Ka Oy	26	26	27%	27%	7	7
Total	1,160	886	28%	28%	319	251

*Ban Nam Nian (Trading Village) results were not included in Income Calculations.

Table A-4: Outline of Socio-Economic Survey Form Contents

<u>SOCIO-ECONOMIC SURVEY</u>	
A)	<p>Non-fixed Assets</p> <ol style="list-style-type: none"> 1. Number of animals: chickens, ducks, geese, turkeys, pigs, cows, goats, buffalo and horses 2. Large farming equipment 3. Boats and fishing gear 4. Motors and other machines 5. Furniture 6. Clothes and other personal belongings to be transported
B)	<p>Food Sources</p> <ol style="list-style-type: none"> 1. Upland rice – kilo production from the previous year 2. Paddy rice – kilo production from the previous year 3. Gardens – types of vegetables and fruits 4. Hunting – types of animals 5. Wild foods – types of edible plants 7. Fishing – amount of catch 8. Shops – purchased food types
C)	<p>Income Sources and Household Income in Cash or Consumption</p> <ol style="list-style-type: none"> 1. Non-Timber Forest Products (NTFPs) 2. Wildlife and wild plants 3. Wages 4. Domestic Animals (types, prices) 5. Farm produce 6. Fish 7. Handicraft 8. Sale of assets
D)	<p>Health</p> <ol style="list-style-type: none"> 1. Any member of the household deceased over the last year: Age and cause of death 2. Illness in the year: List of most common types listed. 3. Number of visits to doctor or clinic 4. Distance to nearest medical facility 5. Medicine purchased 6. Number of mosquito nets 7. Water source – identify and number of meters from dwelling
E)	<p>Education</p> <ol style="list-style-type: none"> 1. How many years of schooling for each member 2. Which children are presently attending school - frequency, sex 3. Reason for non-attendance 4. Distance to nearest school
F)	<p>Problems/Concerns/ Opinions</p>

Table A-5: Affected households in the reservoir area by village, from surveys conducted since 1995

Name of Village or Settlement	Social/Cultural Research Institute February 1995	LWU Survey March 1995	CARE Survey February 1996	PCPP Survey April 1997	PCPP Survey May 1998	RMU Census October 1998		
						Registered Households	Affected Households	Affected Persons
Ban Oudomsouk	167	N/A	N/A	234	248	283	94*	521*
Ban Sop Hia	24	N/A	51	34	53	54	54	327
Ban Pakkatan (abandoned)	N/A	N/A	(w/ Sop Hia)					
Ban Nam Nian	24	N/A	24	14	17	16	16	96
Ban Nya Long (abandoned)	N/A	N/A	4					
Ban Tham On (abandoned)	N/A	N/A	12					
Ban Thalang	28	28	37	35	50	52	52	265
Ban Nong Boua Kham	48	39	41	53	55	42	42	283
Ban Nakai Tai	134	140	130	130	148	147	147	730
Ban Nakai Neua	59	58	58	58	63	67	67	303
Ban Sop Phene	40	38	40	38	41	43	43	204
Ban Hat Khamphane	(w/ Sop Ma)	(w/ Sop Ma)	(w/ Sop Ma)	10	18	18	18	71
Ban Sop Ma	38	38	34	14	14	15	15	72
Ban Keng Gnao	(w/ Sop Ma)	(w/ Sop Ma)	(w/ Sop Ma)	14	14	14	14	78
Ban Nong Boua	(w/ Sailom)	(w/ Sailom)	(w/ Sailom)	(w/ Sailom)	9	8	8	52
Ban Sailom	28	27	40	35	12	13	13	52
Ban Pamanton	(w/ Sailom)	(w/ Sailom)	(w/ Sailom)	(w/ Sailom)	7	7	7	47
Ban Phonphanpek (incl. Jat San)	N/A	N/A	N/A	51**	93 **	85	0*	0
Ban Boua Ma	48	54	39	39	53	53	53	259
Ban Phonsavang	28	29	29	28	22	25	25	137
Ban Nikhom 3 (incl. in Sop On)	N/A	12	N/A	N/A	3			
Ban Sop On	62	60	58	62	62	66	66	382
Ban Done	81	85	87	88	88	89	89	655
Ban Khone Khen	36	36	36	36	37	37	37	202
Ban Ka Oy	N/A	25	23	24	26	26	26	153
Affected Households	630	630	702	659	737		886*	4,889
Total Households	845	669	743	946	1133	1160		

- Blank spaces indicate village no longer exists

* Actual numbers of houses affected were not known until detailed elevation surveys were conducted in late 1998 as part of the Notification/Registration process. Previous surveys included total number of houses in these villages. In addition, there are 25 households in Ban Oudomsouk and 19 in Ban Phonphanpek which have agricultural land located in the reservoir, for which they will be compensated, even though their houses are outside the reservoir area. In April 2002, a decision was made to provide the 51 previously classified as "unaffected" households at Ban Jat San with village infrastructure and livelihood program

** Ban Phonphanpek included only Ban Jat San (51 houses) in PCPP Survey April 1997 because of doubt regarding the village boundary. Clarification of the boundary resulted in an increase to 93 houses in the PCPP Survey May 1998.

Table A-6: Household Size Distribution of Affected Households

No. of People in Household	No. of Households	No. of People
1	36	36
2	69	138
3	105	315
4	132	528
5	131	655
6	123	738
7	98	686
8	75	600
9	51	459
10	34	340
11	13	143
12	7	84
13	6	78
14	3	42
15	1	15
16	2	32
Total	886	4,889
Average HH Size	5.518	

Table A-7: School Attendance

Age Group	Number	%
Age 0 - 4	888	53%
Age 5 - 9	511	31%
Age 10 - 14	170	10%
Age 15 - 19	99	6%
Total:	1,668	100%

Table A-8: Cash and Imputed Incomes of Reservoir Households

Activities	CARE SURVEY Feb 1996	CARE SURVEY Feb 1996	CARE SURVEY Feb 1996	Oct 1998 Sample Survey	Oct 1998 Sample Survey	Oct 1998 Sample Survey
	Income (Kip)	Income (US\$)	Kilos	Income (Kip)	Income (US\$)	Kilos
Self-Grown Products Sold						
Agriculture				17,599	4	32
Livestock (kilos)	83,000	83	16	158,103	38	40
Livestock (# of animals)				236,249	57	8 #
Wildlife	18,000	18	78	8,803	2	3
NTFPs	97,000	97	280	99,257	24	283
Fishing	23,000	23	57	84,926	20	63
Wages	36,000	36		203,947	49	0
Jewelry (Gold)				7,305	2	0
Jewelry (Silver)				3,951	1	0
Handicrafts, Cotton				469	0	0
Handicrafts, Wood/Bamboo				7,846	2	2
A. TOTAL CASH INCOME	257,000	257	431	828,454	199	423
Self-Grown Products Consumed						
Milled Rice Production	140,000	140	387	541,813	130	452
Milled Donated Rice/Rice for Work				80,998	19	67
Wildlife	31,000	31		34,050	8	12
Fishing	34,000	34		106,753	26	76
NTFPs				19,902	5	57
Agriculture				223,165	54	366
Livestock				32,020	8	8
Handicrafts, Wood/Bamboo				1,705	0	0
B. TOTAL IMPUTED INCOME	205,000	205	387	1,040,406	250	1,038
TOTAL INCOME (A + B)	462,000	462	818	1,868,860	449	1,461

Note: October 1998 exchange rate is: Lao Kip 4170 = USD 1.00

Table A-9: Income Variability of Villages

Village	Income per Head			No. of HH	No. of people	Avg. HH size	Income per Household		
	Kip	US\$	% of avg.				Kip	US\$	% of avg.
Ban Phonephanpek	141,492	33.93	43%	85	422	5.0	702,465	168.46	38%
Ban Ka Oy	166,086	39.83	50%	26	153	5.9	977,355	234.38	52%
Ban Sop Hia	181,713	43.58	55%	54	327	6.1	1,100,373	263.88	59%
Ban Keng Gnao	214,195	51.37	65%	14	78	5.6	1,193,370	286.18	64%
Ban Sop Ma	225,807	54.15	69%	15	72	4.8	1,083,873	259.92	58%
Ban Phonesavang	241,887	58.01	73%	25	137	5.5	1,325,542	317.88	71%
Ban Boua Ma	269,480	64.62	82%	53	259	4.9	1,316,894	315.80	70%
Ban Hat khamphane	273,365	65.56	83%	18	71	3.9	1,078,273	258.58	58%
Ban Nong Boua	276,974	66.42	84%	8	52	6.5	1,800,332	431.73	96%
Ban Pamanton	287,788	69.01	87%	7	47	6.7	1,932,294	463.38	103%
Ban Nong Boua Kham	288,432	69.17	88%	42	283	6.7	1,943,486	466.06	104%
Ban Oudomsouk	293,405	70.36	89%	94	521	5.5	1,626,211	389.98	87%
Ban Sop On	313,727	72.23	95%	66	382	5.8	1,815,811	435.45	97%
Ban Thalang	325,681	78.10	99%	52	265	5.1	1,659,720	398.01	89%
Ban Sailom	385,168	92.37	117%	13	52	4.0	1,540,673	369.47	82%
Ban Nakai Tai	386,266	92.63	117%	147	730	5.0	1,918,194	460.00	103%
Ban Done	386,902	92.78	117%	89	655	7.4	2,847,428	682.84	152%
Ban Sop Phene	424,493	101.80	129%	43	204	4.7	2,013,874	482.94	108%
Ban Khone Khen	449,010	107.68	136%	37	202	5.5	2,451,352	587.85	131%
Ban Nakai Neua	560,909	134.51	170%	67	303	4.5	2,536,648	608.31	136%
Ban Nam Nain	572,425	137.27	174%	16	96	6.0	3,434,549	823.63	184%
AVERAGE	329,320	78.97	100%	886	4,889	5,518	1,868,860	448.17	100%

Notes:

1. The results for the trading village of Ban Nam Nian (8 HH in sample) are noted above but have not been used in determining overall averages because they were quite atypical due to the trading activities.
2. For Ban Oudomsouk, only statistics for affected households are included. There are another 189 households in Ban Oudomsouk, of which 25 have agricultural land in the reservoir. See Table H-5.
3. Village household incomes are arranged from low to high.
4. 4,170 Kip/USD.
5. Data in Tables H-8 and H-9 based on 243 affected households.

Figure A-1: Income Variability of Villages

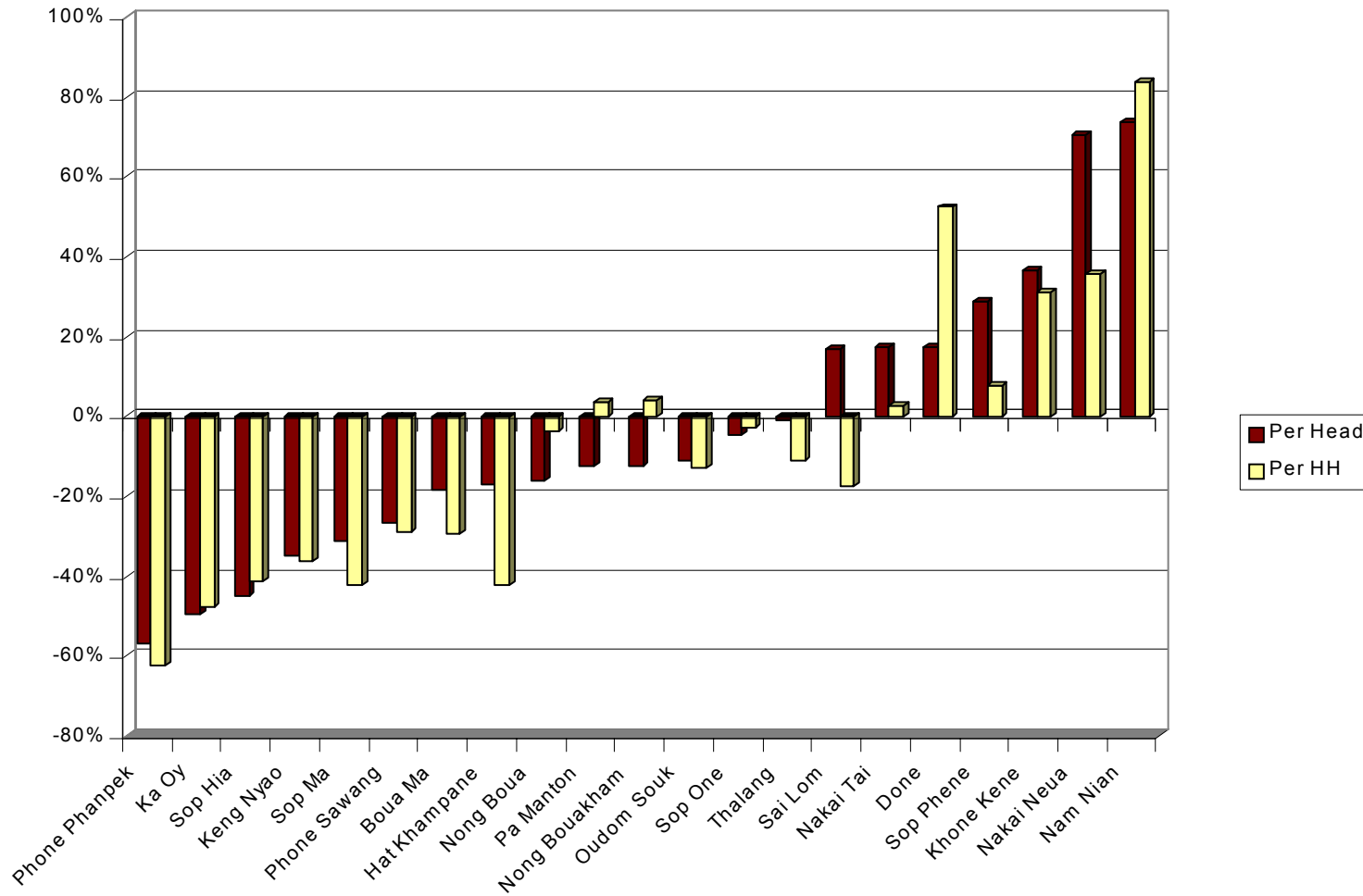


Table A-10: Potentially Vulnerable Households

Affected Households	PV Households	PVH %	Category								Total Categories
			1	2	3	4	5	6	7	8	
0	2										2
26	6	23	2	3	1			2			8
54	8	15	4	1	2			1			8
14	2	14	1	1							2
15	3	20	1	1	1						3
25	4	16	3		1	3		1	1		9
53	14	26	9	2	2	1		3			17
18	4	22	1	1	1				1		4
8	1	13							1		1
7	0	0									0
42	6	14	5			1		2			8
94	22	23	12	3		1		1	1	7	25
66	19	29	10	4	5	2		2	1		24
52	8	15	3	2	3			2			10
13	4	31	1	1	2			1			5
147	37	25	22	6	7	7		9	4		55
89	25	28	11	1	9	6		3	6		36
43	10	23	5	1	3	3		2	1		15
37	10	27	3		4	3		2	2		14
67	20	30	8	5	7	1		4			25
16	2	13	1	1				1			3
886	207	23	102	33	48	28	0	36	18	7	272

Category	Definition	
	Head of Household	Balance of Household
1	Male over 60 in 2003	Insufficient able-bodied working age males. *
2	Female (not widow)	
3	Widow	
4	Handicapped	
5	Under 16 in 1998	
6	Single person HH	-
7	-	Two or more handicapped persons
8	Non-Lao	-

* For a 4 person household or less, "insufficient" is defined as less than 2. Similarly for a 5-8 person household, it is less than 3 and for a household in excess of 8 persons, less than 4.

Not included in Totals

Some individual households match more than one category

Villages arranged in ascending order of current per head income.

Although there is little positive correlation evident in the above results between current economic circumstances and these vulnerability definitions another potential vulnerability characteristic which will be monitored during the implementation phase will be low income families. Accordingly, this preliminary categorisation should be considered as quite a conservative benchmark estimate.

Table A-11: Age, Marital Status, Birth Place, Gender, Religion of Affected Population

AFFECTED RESERVOIR POPULATION 4889 People

Age Profile (all affected population)

0 - 9	1632	33%
10 - 19	1023	21%
20 - 29	737	15%
30 - 39	594	12%
40 - 49	415	8%
50 - 59	221	5%
60+	264	5%
no response	2	0%
	4888	

Sex (all affected population)

Male	2387	49%
Female	2501	51%
No Response	1	
	4889	

Religion (all affected population)

Bhuddist	1570	32%
Animist	3285	67%
Christian	26	1%
no response	7	0%
	4888	

Marital Status (all affected population)

Unmarried	2745	56%
Married	1831	37%
Divorced	121	2%
Widowed	191	4%
	4888	

Place of Birth (all affected population)

Nakai	3876	79%
Khamkheuth	466	10%
Nhomalath	88	2%
Thakek	91	2%
Hinboun	59	1%
Mahasay	34	1%
Others	275	6%
Total:	4889	

Table A-12: Education, Occupation of Head of Household

Education Level (head of household)		
Primary School 1	24	3%
Primary School 2	115	13%
Primary School 3	84	9%
Primary School 4	34	4%
Primary School 5	101	11%
Secondary School 1	11	1%
Secondary School 2	8	1%
Secondary School 3	47	5%
Secondary School 4	0	0%
High School 1	1	0%
High School 2	2	0%
High School 3	21	2%
College	6	1%
Institute	2	0%
University	3	0%
Semester/Master	1	0%
Others	2	0%
No Schooling	423	48%
No Response	1	0%
	886	100%

Table H-13: Education, Occupation of Affected Population

Education Level (all affected population)		
Primary School 1-5	1526	31%
Secondary School 1-4	214	4%
High School 1-3	43	1%
College	8	0%
Institute	5	0%
University	7	0%
Semester/Master	1	0%
Others	9	0%
Illiterate	3076	63%
Total:	4889	100%

Occupation (all affected population)		
Farmer	1628	33%
Civil Servant	719	15%
Construction/Service Sector	38	1%
Forestry/Sawmill/Wood	8	0%
Trader (including small shop)	18	0%
Making Handicrafts	18	0%
Retired Civil Servant	1	0%
Handicap or Elderly Person	133	3%
Student	697	14%
Child or Unemployed	1668	34%
No Response	10	0%

Table A-14: Housing Characteristics

Ownership Status of House (head of household)		
Own house	868	98%
Tenant	4	0%
Live w/ relatives	2	0%
State House	7	1%
Other	3	0%
No Response	2	0%
Total:	886	100%
Type of House (head of Household)		
Concrete	1	0%
Half concrete, half wood	0	0%
Wood	396	45%
Bamboo	487	55%
Other	2	0%
Total:	886	100%
Electricity Type (head of household)		
Have electricity	1	0%
Share electricity	0	0%
Use a generator	1	0%
Use a battery	28	3%
No electricity	850	96%
No response	6	1%
Total:	886	100%
Type of Roof for House (head of household)		
Thatched	442	50%
Timber Tile	309	35%
Galvanised Iron	122	14%
Masonry Tile	0	0%
No Response	13	1%
Total:	886	100%
Type of Floor in House (head of household)		
Bamboo	231	26%
Softwood	293	33%
Hardwood	351	40%
Cement	1	0%
No Response	10	1%
Total:	886	100%
Type of Walls in House (head of household)		
Bamboo	582	66%
Softwood	186	21%
Hardwood	109	12%
Bricks	1	0%
No Response	8	1%
Total:	886	100%
Type of Pillars for House (head of household)		
Bamboo	7	1%
Softwood	241	27%
Hardwood	627	71%
Concrete	3	0%
No Response	8	1%
Total:	886	100%
Water Source (head of household)		
Covered Well	42	5%
Uncovered Well	307	35%
River, pond	531	60%
Rain Water	4	0%
Other	2	0%
Total:	886	100%
Year Moved into House (head of household)		
Before 1960	8	1%
1960 - 1969	15	2%
1970 - 1974	48	5%
1975 - 1979	69	8%
1980 - 1989	110	12%
1990 - 1994	126	14%
1995 - 1996	83	9%
1997 - 1998	31	3%
No Response	396	45%
Total:	886	100%

Table A-15: Livestock Population for Reservoir Villages

Village Name	Livestock Population 1996			Livestock Population 1998		
	Buffalo	Pigs	Poultry	Buffalo	Pigs	Poultry
Ban Nakai Neua	209	22	500	384	36	763
Ban Nakai Tai	740	260	580	1123	89	2281
Ban Sop Phene	100	150	2000	188	39	428
Ban Ma/Keng Gnao	31	13	850	35	21	365
Ban Tham On	19	21	600	Village no longer exists		
Ban Boua Ma	262	59	246	304	53	634
Ban Sop On	105	36	600	166	95	552
Ban Phonsavang	69	25	150	77	7	158
Ban Done	760	262	1400	1076	115	2381
Ban Khone Khen	153	56	363	164	72	331
Ban Sailom	239	60	200	47	13	49
Ban Sop Hia	40	20	300	73	32	1154
Ban Nong Boua Kham	15	15	230	4	38	615
Ban Thalang	328	158	1700	51	40	661
Ban Nya Long	14	7	80	Village no longer exists		
Ban Nam Nian	16	17	250	8	0	262
SUB-TOTAL	3100	1181	10,049	3700	650	10,634
Ban Hat Khamphane	Not included in 1996 survey			58	5	310
Ban Ka Oy	Not included in 1996 survey			38	57	364
Ban Nong Boua	Not included in 1996 survey			140	3	145
Ban Oudomsouk	Not included in 1996 survey			56	48	1178
Ban Pamanton	Not included in 1996 survey			16	2	148
Ban Phonphanpek	Not included in 1996 survey			138	22	393
SUB-TOTAL	Not included in 1996 survey			446	137	2538
TOTAL	3100	1181	10,049	4146	787	13,172

Table A-16: Livestock Ownership Per Household

Village Name	CARE Survey - 1996			Oct 1998 Census		
	Average Ownership/HH			Average Ownership/HH		
	Buffalo	Pigs	Poultry	Buffalo	Pigs	Poultry
Ban Nakai Neua	3.6	0.4	8.6	6.7	0.6	13.4
Ban Nakai Tai	5.7	2.0	4.5	7.7	0.6	15.7
Ban Sop Phene	2.5	3.8	50.0	4.6	1.0	10.4
Ban Ma/Keng Gnao	0.9	0.4	25.0	1.2	0.7	12.6
Ban Tham On	1.6	1.8	50.0	Village no longer exists		
Ban Boua Ma	6.7	1.5	6.3	5.7	1.0	12.0
Ban Sop On	1.8	0.6	10.3	2.7	1.5	8.9
Ban Phonsavang	2.4	0.9	5.2	3.1	0.3	6.3
Ban Done	8.7	3.0	16.1	12.4	1.3	27.4
Ban Khone Khen	4.3	1.6	10.1	4.4	1.9	8.9
Ban Sailom	6.0	1.5	5.0	3.6	1.0	3.8
Ban Sop Hia	0.8	0.4	5.9	1.4	0.6	21.4
Ban Nong Boua Kham	0.4	0.4	5.6	0.1	1.2	18.6
Ban Thalang	8.9	4.3	45.9	1.2	1.0	16.1
Ban Nya Long	3.5	1.8	20.0	Village no longer exists		
Ban Nam Nian	0.7	0.7	10.4	0.5	0.0	16.4
SUB-TOTAL	4.3	1.6	14.0	5.3	0.9	15.3
Ban Hat Khamphane	No data available			3.2	0.3	17.2
Ban Ka Oy	No data available			1.5	2.2	14.0
Ban Nong Boua	Included with Ban Sailom			17.5	0.4	18.1
Ban Oudomsouk	No data available			0.6	0.5	12.5
Ban Pamanton	Included with Ban Sailom			2.3	0.3	21.1
Ban Phonphanpek	No data available			3.5	0.6	10.1
SUB-TOTAL	No data available			2.3	0.7	13.2
TOTAL	4.3	1.6	14.0	4.7	0.9	14.9

Table A-17: Fruit Trees in the Reservoir

Type of Tree	Mature	Middle Aged	Young	Seedling	Total
Mango	391	922	235	1,187	2,735
Jackfruit	816	1,290	277	2,311	4,694
Tamarind	206	303	123	553	1,185
Coconut	22	58	31	121	232
Milk Fruit	16	29	12	120	177
Bamboo	181	263	41	58	543
Pomelo	599	619	145	747	2,110
Marian Plum	0	0	10	0	10
Lemon	44	109	5	80	238
Longan	33	46	5	112	196
Guava	22	152	68	77	319
Type of Mangostein (Yellow)	0	2	0	3	5
Egg Tree	1	38	12	69	120
Red Cotton Tree	32	60	84	100	276
Hogplum	0	1	0	0	1
Carambola	1	7	1	0	9
Star Gooseberry	0	0	0	5	5
Custard Apple	0	0	0	2	2
Jujube	0	5	3	3	11
Sour Berry	9	5	0	4	18
Betel	34	5	0	1	40
Kam tree	2	0	0	0	2
Naseberry	0	0	0	10	10
Rambutan	0	1	0	0	1
Neem	1	0	0	0	1
Bael Fruit	0	5	0	0	5
Orange	3	0	0	0	3
Grenade Tree	1	15	0	0	16
Un Tree	0	1	0	0	1
Banana					7,279
Sugarcane					23,009
Tea					18,381
Coffee					746
Pineapple					27,842
Melon					0
Papaya					133
Tea					6,344
Lead Tree					5
Cassava					6,030
Mulberry					16
Nae Tree					3,000

Table A-18: Health Data

Cause of Death		Age Range
Fever	16	0-65
Malaria	10	0-67
Don't Know	10	0-113
Stomach Ache	5	0-70
Stillborn Baby	3	0
Lung Cancer	1	61
Diarrhea	1	2
Disappeared	1	61
Dengue Fever	1	6
Constipation	1	35
Allergy to Fruit	1	7
AFP	1	50
	51	

of People Reporting Disease in Past Year

Malaria	232
Diarrhea	106
Respiratory Disease	74
Accident	14

Distance to hospital (km)

11.2	avg
7	med
94	high
0.01	low

**Of those reporting a doctor visit,
of Visits to Doctor in Past Year**

3.9	avg
3.9	med
50	high
1	low

of Mosquito Nets

791	sum
2.8	avg
3	med
30	high
1	low

Distance to School (km)

1.4	avg
0.6	med
14	high
0.02	low

**Of those who reported using medicine (some people using >1 medicine),
of Times Medicine was Bought/Used**

Paracetamol	228
Quinine	105
Chloroquine	55
Tetracycline	54
Novalgine	34
Ampiciline	30
Stomach medicine	18
Malacine	18
Analgine	14
Cough medicine	9
Herbs	6
Others (28)	59

Table A-19: Sample Households by Village

Community	House No.	Affected	Head of Household	No. of persons in HH	Cash Income (Kip)	Imputed Income (Kip)	Total Income (Kip)
English	A	B	C	D	E	F	E+F
Ban Pamanton							
	-	Yes	-	7	880,000.00	1,950,014.00	2,830,014.00
	-	Yes	-	9	388,000.00	1,255,725.00	1,643,725.00
	-	Yes	-	5	961,000.00	1,184,680.00	2,145,680.00
	-	Yes	-	8	271,500.00	1,096,535.00	1,368,035.00
	-	Yes	-	6	1,340,000.00	1,235,125.00	2,575,125.00
	-	Yes	-	5	227,000.00	1,159,988.00	1,386,988.00
	-	Yes	-	7	325,000.00	1,030,740.00	1,355,740.00
				47	4,392,500.00	8,912,807.00	13,305,307.00
Ban Nong Boua							
	-	Yes	-	6	1,992,000.00	908,669.00	2,900,669.00
	-	Yes	-	7	3,020,000.00	666,250.00	3,686,250.00
	-	Yes	-	10	1,390,000.00	1,022,338.00	2,412,338.00
	-	Yes	-	7	961,000.00	1,061,262.00	2,022,262.00
	-	Yes	-	6	640,000.00	335,850.00	975,850.00
	-	Yes	-	3	33,000.00	112,540.00	145,540.00
	-	Yes	-	8	530,000.00	866,465.00	1,396,465.00
	-	Yes	-	5	50,000.00	667,630.00	717,630.00
				52	8,616,000.00	5,641,004.00	14,257,004.00
Ban Sailom							
	-	Yes	-	6	340,000.00	772,090.00	1,112,090.00
	-	Yes	-	9	229,500.00	1,359,610.00	1,589,110.00
	-	Yes	-	3	1,038,000.00	989,501.00	2,027,501.00
	-	Yes	-	5	606,000.00	2,226,835.00	2,832,835.00
	-	Yes	-	3	10,000.00	0.00	10,000.00
	-	Yes	-	3	1,245,000.00	1,943,920.00	3,188,920.00
				29	3,468,500.00	7,291,956.00	10,760,456.00
Ban Keng Gnao							
	-	Yes	-	7	255,000.00	462,750.00	717,750.00
	-	Yes	-	7	508,000.00	519,340.00	1,027,340.00
	-	Yes	-	4	342,000.00	623,380.00	965,380.00
	-	Yes	-	7	900,000.00	266,610.00	1,166,610.00
	-	Yes	-	5	0.00	623,415.00	623,415.00
	-	Yes	-	4	905,000.00	286,790.00	1,191,790.00
	-	Yes	-	2	90,000.00	1,847,880.00	1,937,880.00
				36	3,000,000.00	4,630,165.00	7,630,165.00
Ban Sop Ma							
	-	Yes	-	3	308,000.00	263,285.00	571,285.00
	-	Yes	-	9	964,000.00	1,246,210.00	2,210,210.00
	-	Yes	-	3	360,000.00	255,115.00	615,115.00
	-	Yes	-	3	991,000.00	662,765.00	1,653,765.00
	-	Yes	-	3	50,000.00	379,495.00	429,495.00
	-	Yes	-	4	394,000.00	112,450.00	506,450.00
	-	Yes	-	4	268,000.00	264,040.00	532,040.00
				29	3,335,000.00	3,183,360.00	6,518,360.00
Ban Nam Nian							
	-	Yes	-	5	2,490,000.00	551,140.00	3,041,140.00
	-	Yes	-	2	884,000.00	1,419,118.00	2,303,118.00
	-	Yes	-	8	720,000.00	1,254,550.00	1,974,550.00
	-	Yes	-	9	2,440,000.00	1,399,500.00	3,839,500.00
	-	Yes	-	5	6,780,000.00	1,949,261.00	8,729,261.00
	-	Yes	-	4	970,000.00	486,725.00	1,456,725.00
	-	Yes	-	8	1,381,100.00	1,081,363.00	2,462,463.00
	-	Yes	-	1	300,000.00		300,000.00
				42	15,965,100.00	8,141,657.00	24,106,757.00
Ban Hat							
	-	Yes	-	4	650,000.00	521,612.00	1,171,612.00
	-	Yes	-	6	590,000.00	849,618.00	1,439,618.00
	-	Yes	-	2	318,000.00	882,015.00	1,200,015.00
	-	Yes	-	6	628,000.00	2,118,123.00	2,746,123.00
	-	Yes	-	6	270,000.00	733,805.00	1,003,805.00
	-	Yes	-	3	962,000.00	175,088.00	1,137,088.00
	-	Yes	-	6	580,000.00	76,172.00	656,172.00
	-	Yes	-	5	100,000.00	813,550.00	913,550.00
	-	Yes	-	2	220,000.00	644,865.00	864,865.00

Community	House No.	Affected	Head of Household	No. of persons in HH	Cash Income (Kip)	Imputed Income (Kip)	Total Income (Kip)
English	A	B	C	D	E	F	E+F
				40	4,318,000.00	6,814,848.00	11,132,848.00
Ban Ka Oy							
	-	Yes	-	11	535,000.00	1,518,707.50	2,053,707.50
	-	Yes	-	5	1,463,000.00	205,400.00	1,668,400.00
	-	Yes	-	9	1,842,000.00	142,410.00	1,984,410.00
	-	Yes	-	11	1,400,000.00	302,135.00	1,702,135.00
	-	Yes	-	11	155,000.00	127,745.00	282,745.00
	-	Yes	-	3	430,000.00	946,570.00	1,376,570.00
	-	Yes	-	12	60,000.00	938,900.00	998,900.00
				62	5,885,000.00	4,181,867.50	10,066,867.50
Ban Khone Ken							
	-	Yes	-	8	116,000.00	1,013,240.00	1,129,240.00
	-	Yes	-	6	154,000.00	1,789,900.00	1,943,900.00
	-	Yes	-	6	2,700,000.00	2,092,540.00	4,792,540.00
	-	Yes	-	6	930,000.00	1,419,336.00	2,349,336.00
	-	Yes	-	3	1,394,000.00	1,070,910.00	2,464,910.00
	-	Yes	-	6	928,000.00	1,527,085.00	2,455,085.00
	-	Yes	-	6	595,000.00	1,112,750.00	1,707,750.00
	-	Yes	-	4	2,960,000.00	875,646.00	3,835,646.00
	-	Yes	-	1	0.00	9,600.00	9,600.00
				46	9,777,000.00	10,911,007.00	20,688,007.00
Ban Nong Boua							
	-	Yes	-	5	790,000.00	930,200.00	1,720,200.00
	-	Yes	-	8	745,000.00	1,054,039.00	1,799,039.00
	-	Yes	-	9	777,000.00	1,558,975.00	2,335,975.00
	-	Yes	-	8	1,487,000.00	3,594,090.00	5,081,090.00
	-	Yes	-	3	55,000.00	686,375.00	741,375.00
	-	Yes	-	5	772,000.00	680,299.00	1,452,299.00
	-	Yes	-	9	1,210,000.00	1,160,760.00	2,370,760.00
	-	Yes	-	8	668,000.00	814,865.00	1,482,865.00
	-	Yes	-	8	920,000.00	692,040.00	1,612,040.00
	-	Yes	-	4	225,000.00	791,005.00	1,016,005.00
	-	Yes	-	2	372,500.00	600,620.00	973,120.00
				69	8,021,500.00	12,563,268.00	20,584,768.00
Ban Sop Phene							
	-	Yes	-	3	294,000.00	971,390.00	1,265,390.00
	-	Yes	-	2	100,000.00	361,940.00	461,940.00
	-	Yes	-	6	15,000.00	186,010.00	201,010.00
	-	Yes	-	11	1,505,000.00	2,363,100.00	3,868,100.00
	-	Yes	-	3	830,000.00	280,929.00	1,110,929.00
	-	Yes	-	5	5,088,000.00	1,225,240.00	6,313,240.00
	-	Yes	-	1	130,000.00	59,747.50	189,747.50
	-	Yes	-	5	320,000.00	795,955.00	1,115,955.00
	-	Yes	-	5	2,160,000.00	658,085.00	2,818,085.00
	-	Yes	-	4	1,285,000.00	610,534.00	1,895,534.00
				45	11,727,000.00	7,512,930.50	19,239,930.50
Ban Thalang							
	-	Yes	-	5	610,000.00	2,260,340.00	2,870,340.00
	-	Yes	-	5	1,190,000.00	1,568,414.00	2,758,414.00
	-	Yes	-	4	1,140,000.00	438,057.00	1,578,057.00
	-	Yes	-	3	2,000.00	334,170.00	336,170.00
	-	Yes	-	3	1,950,000.00	560,430.00	2,510,430.00
	-	Yes	-	7	258,300.00	2,196,424.00	2,454,724.00
				27	5,150,300	7,357,835	12,508,135
Ban Thalang							
	-	Yes	-	5	0.00	226,100.00	226,100.00
	-	Yes	-	6	135,000.00	571,350.00	706,350.00
	-	Yes	-	10	155,000.00	1,654,000.00	1,809,000.00
	-	Yes	-	5	192,000.00	1,474,133.00	1,666,133.00
	-	Yes	-	6	878,000.00	1,485,660.00	2,363,660.00
	-	Yes	-	4	81,000.00	747,900.00	828,900.00
	-	Yes	-	5	1,502,600.00	788,136.00	2,290,736.00
				68	8,093,900.00	14,305,114.00	22,399,014.00
Ban Boua Ma							
	-	Yes	-	7	512,000.00	998,600.00	1,510,600.00
	-	Yes	-	6	332,000.00	943,650.00	1,275,650.00

Community	House No.	Affected	Head of Household	No. of persons in HH	Cash Income (Kip)	Imputed Income (Kip)	Total Income (Kip)
English	A	B	C	D	E	F	E+F
-	-	Yes	-	6	150,000.00	538,705.00	688,705.00
-	-	Yes	-	8	4,445,000.00	1,556,300.00	6,001,300.00
-	-	Yes	-	7	265,000.00	575,165.00	840,165.00
-	-	Yes	-	5	55,000.00	658,137.00	713,137.00
-	-	Yes	-	2	16,000.00	1,224,784.00	1,240,784.00
-	-	Yes	-	3	185,000.00	902,405.00	1,087,405.00
-	-	Yes	-	9	12,000.00	1,020,160.00	1,032,160.00
-	-	Yes	-	5	692,000.00	647,535.00	1,339,535.00
-	-	Yes	-	9	1,448,000.00	316,900.00	1,764,900.00
-	-	Yes	-	4	30,000.00	734,950.00	764,950.00
-	-	Yes	-	3	100,000.00	1,090,540.00	1,190,540.00
				74	8,242,000.00	11,207,831.00	19,449,831.00
Ban Sop Hia							
-	-	Yes	-	6	30,000.00	372,300.00	402,300.00
-	-	Yes	-	5	145,000.00	1,602,960.00	1,747,960.00
-	-	Yes	-	3	154,000.00	726,890.00	880,890.00
-	-	Yes	-	3	505,000.00	199,175.00	704,175.00
-	-	Yes	-	6	150,000.00	453,292.00	603,292.00
-	-	Yes	-	8	153,000.00	838,488.00	991,488.00
-	-	Yes	-	5	0.00	162,000.00	162,000.00
-	-	Yes	-	9	394,000.00	1,806,253.00	2,200,253.00
-	-	Yes	-	4	440,000.00	401,000.00	841,000.00
-	-	Yes	-	2	0.00	0.00	0.00
-	-	Yes	-	5	47,500.00	879,315.00	926,815.00
-	-	Yes	-	6	310,000.00	776,000.00	1,086,000.00
-	-	Yes	-	6	934,000.00	795,930.00	1,729,930.00
				68	3,262,500.00	9,013,603.00	12,276,103.00
Ban Phonsavang							
-	-	Yes	-	4	560,000.00	521,157.00	1,081,157.00
-	-	Yes	-	3	860,000.00	381,600.00	1,241,600.00
-	-	Yes	-	10	975,000.00	1,026,415.00	2,001,415.00
-	-	Yes	-	7	120,000.00	387,905.00	507,905.00
-	-	Yes	-	6	189,000.00	783,645.00	972,645.00
-	-	Yes	-	6	2,141,000.00	1,246,390.00	3,387,390.00
-	-	Yes	-	1	0.00	0.00	0.00
				37	4,845,000.00	4,347,112.00	9,192,112.00
Ban Nakai Neua							
-	-	Yes	-	7	1,392,000.00	1,200,700.00	2,592,700.00
-	-	Yes	-	3	5,000.00	1,145,600.00	1,150,600.00
-	-	Yes	-	5	1,800,000.00	805,719.00	2,605,719.00
-	-	Yes	-	2	400,000.00	439,470.00	839,470.00
-	-	Yes	-	6	1,520,000.00	1,102,335.00	2,622,335.00
-	-	Yes	-	6	1,265,000.00	608,100.00	1,873,100.00
-	-	Yes	-	2	7,500,000.00	1,285,200.00	8,785,200.00
-	-	Yes	-	4	580,000.00	673,115.00	1,253,115.00
-	-	Yes	-	4	4,463,000.00	1,668,975.00	6,131,975.00
-	-	Yes	-	7	317,000.00	2,209,720.00	2,526,720.00
-	-	Yes	-	9	1,800,000.00	2,325,215.00	4,125,215.00
-	-	Yes	-	5	899,000.00	836,300.00	1,735,300.00
-	-	Yes	-	4	535,000.00	272,600.00	807,600.00
-	-	Yes	-	6	693,000.00	1,557,810.00	2,250,810.00
-	-	Yes	-	4	325,000.00	2,147,440.00	2,472,440.00
-	-	Yes	-	4	1,000,000.00	853,500.00	1,853,500.00
-	-	Yes	-	4	1,096,000.00	1,343,700.00	2,439,700.00
				82	25,590,000.00	20,475,499.00	46,065,499.00
Ban Done							
-	-	Yes	-	13	2,948,000.00	3,633,290.00	6,581,290.00
-	-	Yes	-	4	137,600.00	1,069,985.00	1,207,585.00
-	-	Yes	-	6	960,000.00	1,156,198.00	2,116,198.00
-	-	Yes	-	8	394,000.00	730,145.00	1,124,145.00
-	-	Yes	-	10	2,070,000.00	1,434,330.00	3,504,330.00
-	-	Yes	-	5	1,880,000.00	3,426,430.00	5,306,430.00
-	-	Yes	-	9	2,774,000.00	2,679,675.00	5,453,675.00
-	-	Yes	-	5	1,296,000.00	1,564,100.00	2,860,100.00

Community	House No.	Affected	Head of Household	No. of persons in HH	Cash Income (Kip)	Imputed Income (Kip)	Total Income (Kip)
English	A	B	C	D	E	F	E+F
-	-	Yes	-	7	2,450,000.00	1,592,225.00	4,042,225.00
-	-	Yes	-	6	858,400.00	2,435,981.00	3,294,381.00
-	-	Yes	-	10	235,000.00	1,152,015.00	1,387,015.00
-	-	Yes	-	4	3,177,000.00	271,220.00	3,448,220.00
-	-	Yes	-	10	1,355,000.00	322,430.00	1,677,430.00
-	-	Yes	-	8	80,000.00	1,811,630.00	1,891,630.00
-	-	Yes	-	8	174,250.00	2,348,284.00	2,522,534.00
-	-	Yes	-	12	1,235,000.00	3,177,840.00	4,412,840.00
-	-	Yes	-	7	1,900,000.00	735,965.00	2,635,965.00
-	-	Yes	-	11	1,555,000.00	2,106,890.00	3,661,890.00
-	-	Yes	-	13	750,000.00	1,779,650.00	2,529,650.00
-	-	Yes	-	7	1,272,500.00	1,376,130.00	2,648,630.00
-	-	Yes	-	6	1,935,000.00	1,158,940.00	3,093,940.00
-	-	Yes	-	5	840,000.00	966,300.00	1,806,300.00
				174	30,276,750.00	36,929,653.00	67,206,403.00
Ban							
-	-	Yes	-	9	2,801,000.00	821,400.00	3,622,400.00
-	-	Yes	-	7	90,000.00	424,080.00	514,080.00
-	-	Yes	-	6	425,000.00	1,008,560.00	1,433,560.00
-	-	No	-	3	465,000.00	349,825.00	814,825.00
-	-	No	-	4	10,000.00	429,075.00	439,075.00
-	-	No	-	7	90,000.00	174,800.00	264,800.00
-	-	No	-	3	0.00	873,534.00	873,534.00
-	-	No	-	5	45,000.00	140,355.00	185,355.00
-	-	No	-	6	940,000.00	27,775.00	967,775.00
-	-	No	-	9	228,000.00	263,940.00	491,940.00
-	-	No	-	4	240,000.00	280,625.00	520,625.00
-	-	No	-	2	54,000.00	90,180.00	144,180.00
-	-	No	-	3	451,000.00	37,875.00	488,875.00
-	-	No	-	5	62,000.00	15,150.00	77,150.00
-	-	No	-	5	1,090,000.00	1,630,750.00	2,720,750.00
-	-	No	-	4	703,000.00	1,515.00	704,515.00
-	-	No	-	3	610,000.00	166,201.00	776,201.00
-	-	No	-	5	420,000.00	979,332.00	1,399,332.00
-	-	No	-	5	55,000.00	190,400.00	245,400.00
-	-	No	-	8	960,000.00	1,010.00	961,010.00
-	-	No	-	2	756,000.00	0.00	756,000.00
-	-	No	-	6	1,685,000.00	19,290.00	1,704,290.00
				111	12,180,000.00	5,671,632.00	14,535,632.00
Ban Sop On							
-	-	Yes	-	6	1,224,000.00	1,678,860.00	2,902,860.00
-	-	Yes	-	5	100,000.00	265,014.00	365,014.00
-	-	Yes	-	7	535,000.00	1,058,810.00	1,593,810.00
-	-	Yes	-	5	62,000.00	828,433.00	890,433.00
-	-	Yes	-	4	203,600.00	944,520.00	1,148,120.00
-	-	Yes	-	3	100,000.00	246,680.00	346,680.00
-	-	Yes	-	6	854,000.00	1,299,770.00	2,153,770.00
-	-	Yes	-	4	527,000.00	2,063,776.00	2,590,776.00
-	-	Yes	-	4	500,000.00	1,269,512.00	1,769,512.00
-	-	Yes	-	4	140,000.00	748,570.00	888,570.00
-	-	Yes	-	5	960,000.00	1,979,714.00	2,939,714.00
-	-	Yes	-	12	1,060,600.00	1,641,465.00	2,702,065.00
-	-	Yes	-	8	1,080,000.00	1,400,050.00	2,480,050.00
-	-	Yes	-	8	556,000.00	720,079.00	1,276,079.00
-	-	Yes	-	8	275,000.00	901,950.00	1,176,950.00
-	-	Yes	-	6	1,172,800.00	2,799,627.00	3,972,427.00
				95	9,350,000.00	19,846,830.00	29,196,830.00
Ban Nakai Tai							
-	-	Yes	-	8	186,000.00	914,150.00	1,100,150.00
-	-	Yes	-	4	256,000.00	1,266,810.00	1,522,810.00
-	-	Yes	-	6	300,000.00	719,368.00	1,019,368.00
-	-	Yes	-	4	285,100.00	1,185,450.00	1,470,550.00
-	-	Yes	-	3	1,715,000.00	1,501,850.00	3,216,850.00
-	-	Yes	-	8	256,000.00	1,239,200.00	1,495,200.00
-	-	Yes	-	1	460,000.00	2,128,610.00	2,588,610.00

Community	House No.	Affected	Head of Household	No. of persons in HH	Cash Income (Kip)	Imputed Income (Kip)	Total Income (Kip)
English	A	B	C	D	E	F	E+F
-	-	Yes	-	5	1,370,000.00	2,317,685.00	3,687,685.00
-	-	Yes	-	2	86,000.00	680,730.00	766,730.00
-	-	Yes	-	6	1,806,000.00	3,063,580.00	4,869,580.00
-	-	Yes	-	2	265,000.00	670,480.00	935,480.00
-	-	Yes	-	4	1,210,000.00	1,492,610.00	2,702,610.00
-	-	Yes	-	4	332,000.00	606,180.00	938,180.00
-	-	Yes	-	4	660,000.00	1,310,275.00	1,970,275.00
-	-	Yes	-	7	180,000.00	322,623.00	502,623.00
-	-	Yes	-	3	1,000,000.00	1,216,930.00	2,216,930.00
-	-	Yes	-	7	865,000.00	622,099.00	1,487,099.00
-	-	Yes	-	4	70,000.00	825,000.00	895,000.00
-	-	Yes	-	7	1,618,000.00	1,558,095.00	3,176,095.00
-	-	Yes	-	4	245,000.00	2,158,570.00	2,403,570.00
-	-	Yes	-	3	60,000.00	1,078,170.00	1,138,170.00
-	-	Yes	-	4	475,000.00	2,745,107.00	3,220,107.00
-	-	Yes	-	4	535,000.00	1,236,760.00	1,771,760.00
-	-	Yes	-	6	45,000.00	708,880.00	753,880.00
-	-	Yes	-	6	80,000.00	1,987,110.00	2,067,110.00
-	-	Yes	-	7	66,500.00	1,325,834.00	1,392,334.00
-	-	Yes	-	7	250,000.00	2,165,670.00	2,415,670.00
-	-	Yes	-	5	90,000.00	1,369,510.00	1,459,510.00
-	-	Yes	-	8	3,350,000.00	2,777,270.00	6,127,270.00
-	-	Yes	-	6	370,000.00	348,200.00	718,200.00
-	-	Yes	-	6	190,000.00	1,615,805.00	1,805,805.00
-	-	Yes	-	3	320,000.00	1,174,835.00	1,494,835.00
-	-	Yes	-	10	464,000.00	2,014,220.00	2,478,220.00
-	-	Yes	-	7	1,313,000.00	1,438,370.00	2,751,370.00
-	-	Yes	-	6	153,750.00	1,198,625.00	1,352,375.00
-	-	Yes	-	4	390,000.00	604,340.00	994,340.00
-	-	Yes	-	2	100,000.00	1,295,200.00	1,395,200.00
				187	21,417,350.00	50,884,201.00	72,301,551.00

Ban Oudomsouk

-	-	Yes	-	5	600,000.00	261,430.00	861,430.00
-	-	Yes	-	6	0.00	213,840.00	213,840.00
-	-	Yes	-	9	200,000.00	2,080,250.00	2,280,250.00
-	-	Yes	-	7	1,271,000.00	128,264.00	1,399,264.00
-	-	Yes	-	6	95,000.00	137,015.00	232,015.00
-	-	Yes	-	2	0.00	0.00	0.00
-	-	Yes	-	4	64,000.00	155,650.00	219,650.00
-	-	Yes	-	5	768,320.00	168,430.00	936,750.00
-	-	Yes	-	7	0.00	750,600.00	750,600.00
-	-	Yes	-	9	1,020,000.00	134,795.00	1,154,795.00
-	-	Yes	-	6	4,055,500.00	1,098,955.00	5,154,455.00
-	-	Yes	-	4	1,600,000.00	1,216,465.00	2,816,465.00
-	-	Yes	-	5	4,814,000.00	125,224.00	4,939,224.00
-	-	Yes	-	2	1,320,000.00	5,195.00	1,325,195.00
-	-	Yes	-	7	2,965,030.00	270,409.00	3,235,439.00
-	-	Yes	-	5	47,000.00	118,578.00	165,578.00
-	-	Yes	-	5	432,000.00	101,867.50	533,867.50
-	-	Yes	-	5	1,160,400.00	1,108,965.00	2,269,365.00
-	-	Yes	-	5	810,000.00	705,805.00	1,515,805.00
-	-	Yes	-	6	545,000.00	1,773,800.00	2,318,800.00
-	-	Yes	-	6	322,000.00	1,605,084.00	1,927,084.00
-	-	Yes	-	3	1,920,000.00	730,790.00	2,650,790.00
-	-	Yes	-	10	1,635,000.00	1,052,307.50	2,687,307.50
-	-	Yes	-	8	2,100,000.00	791,317.00	2,891,317.00
-	-	Yes	-	7	2,352,000.00	492,345.00	2,844,345.00
-	-	Yes	-	8	2,570,000.00	790,670.00	3,360,670.00
-	-	Yes	-	4	1,520,000.00	30,375.00	1,550,375.00
-	-	Yes	-	8	430,000.00	753,540.00	1,183,540.00
-	-	Yes	-	8	60,000.00	172,975.00	232,975.00
-	-	Yes	-	8	265,000.00	1,392,900.00	1,657,900.00
-	-	Yes	-	5	0.00	74,590.00	74,590.00
-	-	No	-	4	0.00	0.00	0.00
-	-	No	-	9	1,639,000.00	472,602.00	2,111,602.00

Community	House No.	Affected	Head of Household	No. of persons in HH	Cash Income (Kip)	Imputed Income (Kip)	Total Income (Kip)
English	A	B	C	D	E	F	E+F
-	No	-	9	605,000.00	23,950.00	628,950.00	
-	No	-	2	15,000.00	151,500.00	166,500.00	
-	No	-	7	484,000.00	164,170.00	648,170.00	
-	No	-	7	786,496.00	395,470.00	1,181,966.00	
-	No	-	9	1,340,000.00	317,715.00	1,657,715.00	
-	No	-	3	484,000.00	12,625.00	496,625.00	
-	No	-	7	850,000.00	29,000.00	879,000.00	
-	No	-	3	2,200,704.00	405,150.00	2,605,854.00	
-	No	-	7	925,400.00	104,659.50	1,030,059.50	
-	No	-	3	624,000.00	114,767.00	738,767.00	
-	No	-	4	0.00	27,125.00	27,125.00	
-	No	-	9	950,000.00	29,000.00	979,000.00	
-	No	-	10	15,000.00	380,200.00	395,200.00	
-	No	-	7	285,000.00	81,875.00	366,875.00	
-	No	-	5	675,000.00	172,350.00	847,350.00	
-	No	-	5	1,030,000.00	337,400.00	1,367,400.00	
-	No	-	9	900,000.00	121,010.00	1,021,010.00	
-	No	-	3	984,000.00	33,600.00	1,017,600.00	
-	No	-	3	552,000.00	55,907.00	607,907.00	
-	No	-	5	60,000.00	147,700.00	207,700.00	
-	No	-	4	1,188,000.00	78,895.00	1,266,895.00	
-	No	-	5	100,000.00	134,885.00	234,885.00	
-	No	-	4	350,000.00	76,370.00	426,370.00	
-	No	-	5	0.00	32,400.00	32,400.00	
-	No	-	5	0.00	329,635.00	329,635.00	
-	No	-	9	345,000.00	205,684.00	550,684.00	
-	No	-	12	640,000.00	140,450.00	780,450.00	
-	No	-	4	5,200.00	18,670.00	23,870.00	
-	No	-	3	864,000.00	24,000.00	888,000.00	
-	No	-	6	6,000.00	1,126,850.00	1,132,850.00	
-	No	-	5	3,360,000.00	50,400.00	3,410,400.00	
-	No	-	9	1,550,000.00	177,300.00	1,727,300.00	
-	No	-	8	822,500.00	4,127,684.00	4,950,184.00	
-	No	-	4	1,700,000.00	267,980.00	1,967,980.00	
-	No	-	5	1,900,000.00	159,995.00	2,059,995.00	
-	No	-	4	160,000.00	418,275.00	578,275.00	
			100	64,202,550.00	10,947,248.50	39,342,548.50	

Table A-20: Sample of Detailed Household Income Data

Head of household				Nationality	Ethnic Group	# of people
				Lao	Lao loum	5
Community		House No.	Group	ID	XRef	Affected
283	Oudom Souk		6			Yes
Province			District			
12	Khammouane	1207	Nakai			
Self-Grown Products Sold		HH Income (Kip)		Kilos	Per Capita Income (Kip)	
1. Agriculture		10,000.00			2,000.00	
2. Livestock (kilos)		0.00		0.00	0.00	
3. Livestock (# of animals)		0.00		0.00	0.00	
4. Wildlife						
5. NTFPs		4,000.00		20.00	800.00	
6. Fishing		90,000.00		30.00	18,000.00	
7. Wages		4,680,000.00		0.00	936,000.00	
8. Jewelry (Gold)						
9. Jewelry (Silver)						
10. Handicrafts, Cotton						
11. Handicrafts, Wood/Bamboo		30,000.00		3.00	6,000.00	
A. TOTAL CASH INCOME		4,814,000.00		53.00	962,800.00	
Self-Grown Products Consumed		HH Income (Kip)		Kilos	Per Capita Income (Kip)	
1. Milled Rice Production						
2. Milled Donated Rice/Rice for Work		18,000.00		15.00	3,600.00	
3. Wildlife						
4. Fishing		41,550.00		30.00	8,310.00	
5. NTFPs		16,770.00		60.00	3,354.00	
6. Agriculture		30,300.00		60.00	6,060.00	
7. Livestock		17,938.00		2.00	3,587.60	
8. Handicrafts, Wood/Bamboo		666.00		3.00	133.20	
B. TOTAL IMPUTED INCOME		125,224.00		170.00	25,044.80	
C. TOTAL INCOME (A+B)		4,939,224.00		223.00	987,844.80	