



Nam Theun 2 Power Company Ltd.

Nam Theun 2 Hydroelectric Project

Resettlement Action Plan 1

Khamkeut District

October 2007

A	12 Oct 2007	M. Ovenden	O. Salignat	B. Tribollet	Final issue
REV	DATE	AUTHOR	CHECKED	APPROVED	MODIFICATION DETAILS
<p>Accessibility</p> <p><input type="checkbox"/> Public</p> <p><input type="checkbox"/> Internal</p> <p><input checked="" type="checkbox"/> Confidential</p>					
<p>Document No.</p> <p>N T P C S K 0 4 0 3 0 4 0 0 0 0 0 2 A</p>					
<p>This document is NTPC property and shall not be used, reproduced, transmitted and/or disclosed without prior permission.</p>					

Table of Contents

	Page
1 Introduction.....	3
1.1 RESETTLEMENT ACTION PLAN 1	3
1.1.1 Land Parcel Areas.....	3
1.2 EFFORTS TO MINIMIZE RESETTLEMENT/DISPLACEMENTS.. ERROR! BOOKMARK NOT DEFINED.	3
2 Compensation Policy and Scheme	5
2.1 COMPENSATION POLICY AND SCHEME	5
3 Project affected Household	6
3.1 BASELINE AND CONSULTATION PROCESS	6
3.2 PROJECT AFFECTED HOUSEHOLDS	6
3.3 IMPACT AND MITIGATION MEASURES	6

List of Tables

Table 1. PAH list per LPA	6
Table 2. LPA, description, location, impact and mitigating measures	7

List of Figures

Figure 1. Map 1 of 2. RAP areas in relation to RAP 1.	3
Figure 2. RAP 1, Khamkeut District Area.	4
Figure 3. General Compensation Flowchart	5

List of Annexes

Annex 1. Inventory of Loss for PAHs affected >10% in RAP 1.....	8
---	----------

1 INTRODUCTION

1.1 RESETTLEMENT ACTION PLAN 1

Resettlement Action Plan (RAP) 1 addresses project impacts in the Khamkeut District which covers Land Parcel Agreement (LPA) 1a (Phou Pha Phet Quarry) and LPA 6a+ 6b (temporary and permanent dam site access road).

1.1.1 Land Parcel Areas

The map below shows Khamkeut in relation to other affected areas within Project Lands.

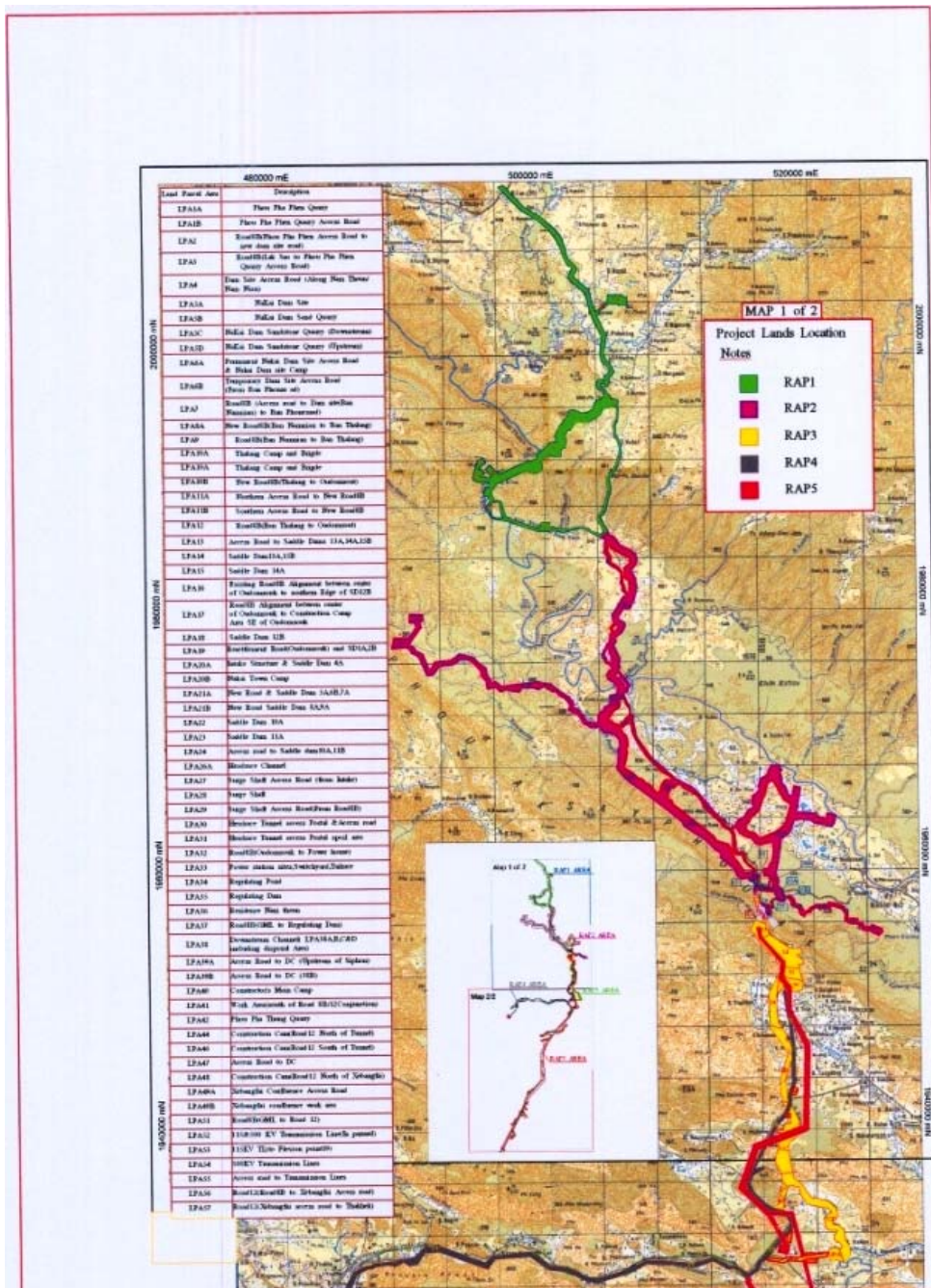


Figure 1. Map 1 of 2. RAP areas in relation to RAP 1.

Figure 2 shows the affected area within Khamkeut District.

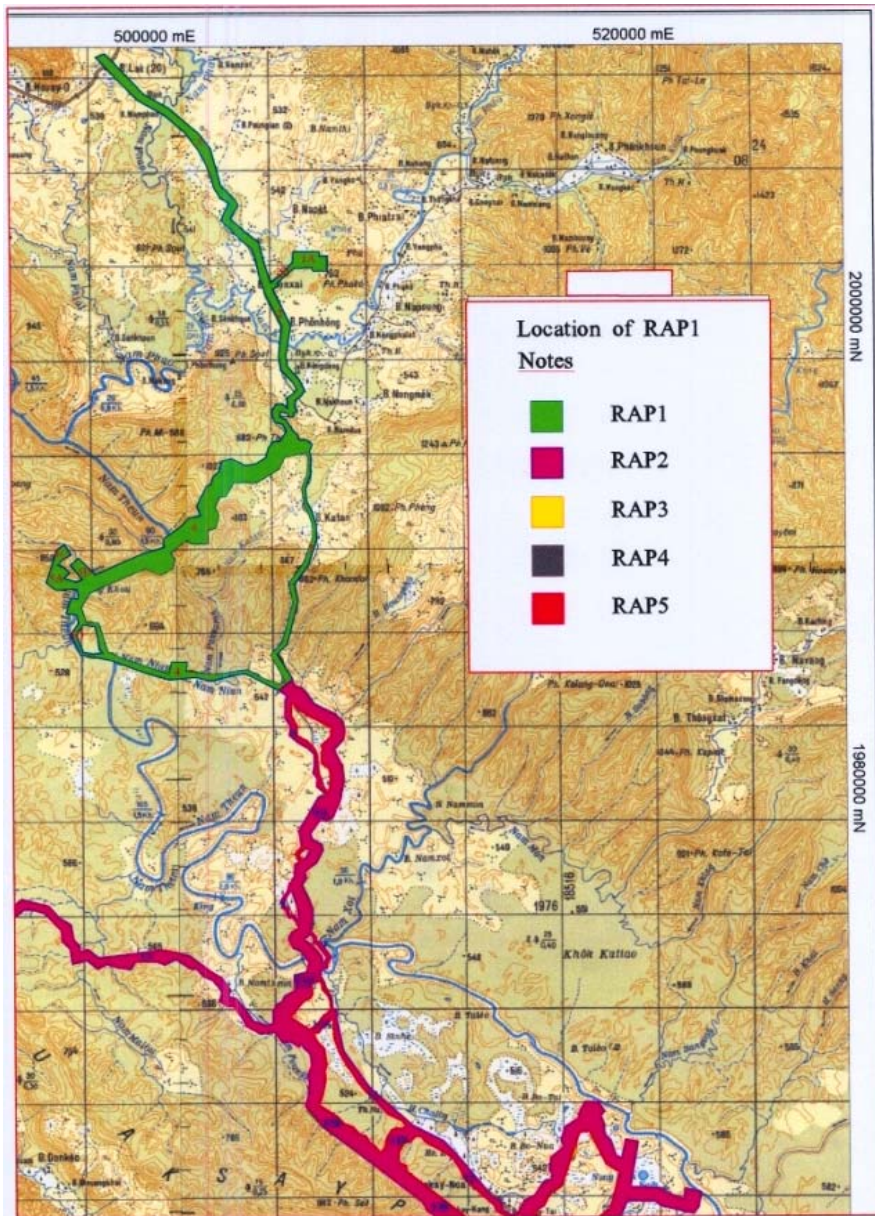


Figure 2. RAP 1, Khamkeut District Area.

2 COMPENSATION POLICY AND SCHEME

2.1 COMPENSATION POLICY AND SCHEME

The compensation policy and scheme of RAP 1 follows the overall scheme found in RAP Volume 1. The general compensation is clearly defined in the flowchart found below:

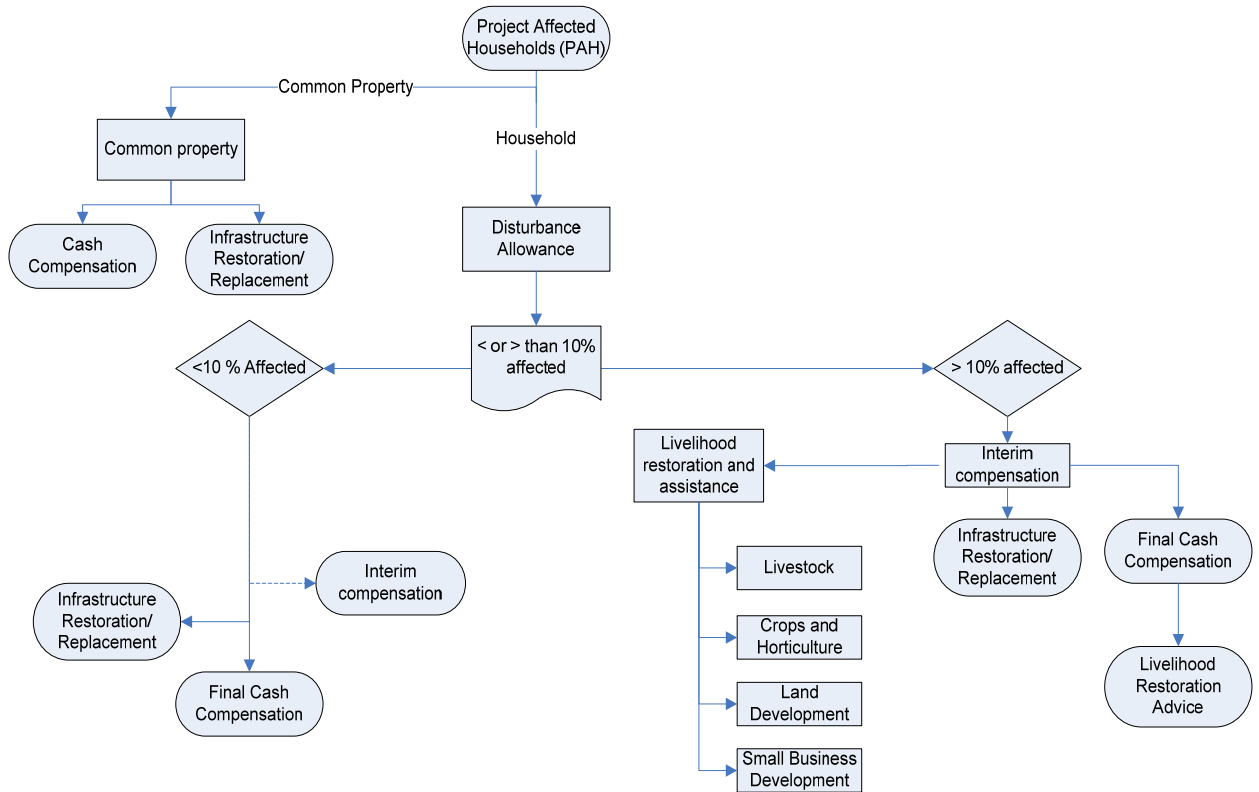


Figure 3. General Compensation Flowchart

3 PROJECT AFFECTED HOUSEHOLD

3.1 BASELINE AND CONSULTATION PROCESS

Baseline information was gathered to assess the extent of the impact and identify potential PAHs within the Khamkeut District. The baseline data gathering process and the consultation process of RAP 1 is consistent with the general process found in RAP Volume 1.

3.2 PROJECT AFFECTED HOUSEHOLDS

There are 24 PAHs within LPA 1a and 6a and 6b as depicted below in Table 1. A total of 24 households have been affected by construction activities, among them 10 households with an estimated loss of income of over 10 percent. In most cases, upland fields were affected, with a loss of income ranging between Kip 480,000 and Kip 2,422,500.

House relocation is not required for RAP 1. Provisional compensation has been paid to seriously affected households in 2005 and 2006 along with final compensation for less seriously affected households. Disturbance allowance, a one time payment of Kip 150,000, was provided in 2005, and preparations are ongoing to provide additional disturbance allowance during the first quarter of 2007 according to the CA entitlement. All 10 PAHs with an estimated loss of income over 10% have received final cash compensation for assets affected.

Land Parcel Area	Name	Total no. of PAHs affected	No. of PAHs with income loss \geq 10 %
1a	Phou Pha Phet Quarry	16	8
6a+b	Additional, Temporary Dam Site Access (along existing alignment) & Permanent Dam Site Access Road	8	2
Total		24	10

Table 1. PAH list per LPA

Summary of fixed assets impacted and type of disturbance per PAH is provided in the annex.

3.3 IMPACT AND MITIGATION MEASURES

Impacts brought about by the NT2 project affect PAHs in different degrees. Table 2 summarizes the impacts in relation to the land parcel area and its corresponding mitigation measures.

Land Parcel Area	Name	Location	Disturbance	Social impact	Social mitigation measures
1a	Phou Pha Phet Quarry	off Road 8b, 10 km south of Lak Sao township, Khamkeut District, Bolikhamxay	<ul style="list-style-type: none"> Loss of section of the limestone outcrop, and construction of a platform for crushing plant, aggregate storage, etc. Blasting and crushing of the limestone outcrop Crushing of rock to gain aggregate 	<ul style="list-style-type: none"> Increased noise and dust due to blasting and operation of heavy equipment Permanent transformation of land Permanent loss of section of Phou Pha Phet limestone outcrop 	<ul style="list-style-type: none"> Heavy equipment fitted with silencers, dust suppression Scheduled blasting program Rental of paddy land around blast zone Compensation for permanent loss of land and assets

Land Parcel Area	Name	Location	Disturbance	Social impact	Social mitigation measures
			<ul style="list-style-type: none"> Storage of aggregate 		
6a+6b	Additional, Temporary Dam Site Access (along existing alignment) & Permanent Dam Site Access Road	Temporary access leads to the dam site from Ban Phon Sa-at, while the permanent access will lead from Ban Phónkéo. Both are in Khamkeut District, Bolikhamxay	<ul style="list-style-type: none"> Clearing of road alignments, installation of drainage structures Use of road by aggregate haulage trucks, and trucks supplying equipment to construction sites, etc. 	<ul style="list-style-type: none"> Some small loss of PAP land or other livelihood assets Possible traffic and dust hazards for those few villagers who may use the road 	<ul style="list-style-type: none"> Full compensation to impacted PAP land and or other livelihood assets. Traffic awareness programs provided to villages Dust control for locals not necessary, as very few locals will use these roads.

Table 2. LPA, description, location, impact and mitigating measures

Annex 1. Inventory of Loss for PAHs affected >10% in RAP 1.

No.	Village/ District	Family ID	Asset affected	LPA	% Impacted	Comments
xxx Village ,Khamkeut District						
1			Upland field	1a	10%	
2			Upland field	1a	19%	
3			Upland field	1a	10%	
4			Upland field	1a	30%	
5			Upland field	1a	14%	
6			Upland field	1a	15%	
7			Upland field	1a	18%	
8			Upland field	1a	22%	
xxx Village, Khamkeut District						
1			Upland field	6b	13%	
2			Upland field, forest product	6b	10%	